



TSX.V: **YGT** | OTCQX: **YGTFF** | Frankfurt: **TX0**

Multi-million Ounce Potential in Yellowknife

July 2021 Corporate Presentation

www.goldterracorp.com

Forward Looking Statement

Statements contained in this presentation that are not historical facts are "forward-looking information" or "forward-looking statements" (collectively, "Forward-Looking Information") within the meaning of applicable Canadian securities legislation. Forward Looking Information includes, but is not limited to, disclosure regarding possible events, conditions or financial performance that is based on assumptions about future economic conditions and courses of action; the timing and costs of future activities on the Company's properties; location and timing of potential future exploration activities; success of exploration, development and environmental protection and remediation activities; permitting time lines and requirements; requirements for additional capital; availability of skilled workforce and local service providers; staking and acquisition of additional mineral properties and claims; requirements for potential environmental conditions relating to mineral claims; planned environmental studies; planned exploration and development of properties and the results thereof; planned expenditures and budgets and the execution thereof. In certain cases, Forward-Looking Information can be identified by the use of words and phrases such as "plans", "expects" or "does not expect", "is expected", "budget", "scheduled", "estimates", "forecasts", "intends", "anticipates", "potential", "confirm" or "does not anticipate", "believes", "contemplates", "recommends" or variations of such words and phrases or statements that certain actions, events or results "may", "could", "would", "might" or "will be taken", "occur" or "be achieved". In preparing the Forward-Looking Information in this presentation, the Company has applied several material assumptions, including, but not limited to, that any additional financing needed will be available on reasonable terms; the exchange rates for the U.S. and Canadian currencies will be consistent with the Company's expectations; that the current exploration, development, environmental and other objectives concerning the Company's properties can be achieved and that its other corporate activities will proceed as expected; that the current price and demand for gold will be sustained or will improve; that general business and economic conditions will not change in a materially adverse manner and that all necessary governmental approvals for the planned exploration, development and environmental protection activities on the Company's properties will be obtained in a timely manner and on acceptable terms; the continuity of the price of gold and other metals, economic and political conditions and operations. Forward-Looking Information involves known and unknown risks, uncertainties and other factors which may cause the actual results, performance or achievements of the Company to be materially different from any future results, performance or achievements expressed or implied by the Forward-Looking Information. Such risks and other factors include, among others, the industry-wide risks and project-specific risks identified in the Company's management discussion and analysis available at www.sedar.com and summarized above; risks related to the availability of financing on commercially reasonable terms and the expected use of proceeds; operations and contractual obligations; changes in exploration programs based upon results of exploration; future prices of metals; availability of third party contractors; availability of equipment; failure of equipment to operate as anticipated; accidents, effects of weather and other natural phenomena and other risks associated with the mineral exploration industry; environmental risks, including environmental matters under Canadian federal and Northwest Territories rules and regulations; impact of environmental remediation requirements; certainty of mineral title; community relations; relations and negotiations with local First Nations in respect of the Company's current and planned activities; delays in obtaining governmental approvals or financing; fluctuations in mineral prices; the Company's dependence on one mineral project; the nature of mineral exploration and mining and the uncertain commercial viability of certain mineral deposits; the Company's lack of operating revenues; governmental regulations and the ability to obtain necessary licenses and permits; risks related to mineral properties being subject to prior unregistered agreements, transfers or claims and other defects in title; currency fluctuations; changes in environmental laws and regulations and changes in the application of standards pursuant to existing laws and regulations which may increase costs of doing business and restrict operations; risks related to dependence on key personnel; and estimates used in financial statements proving to be incorrect; as well as those factors discussed in the Company's public disclosure record. Although the Company has attempted to identify important factors that could affect the Company and may cause actual actions, events or results to differ materially from those described in Forward-Looking Information, there may be other factors that cause actions, events or results not to be as anticipated, estimated or intended. There can be no assurance that Forward-Looking Information will prove to be accurate, as actual results and future events could differ materially from those anticipated in such statements. Accordingly, readers should not place undue reliance on Forward-Looking Information. Except as required by law, the Company does not assume any obligation to release publicly any revisions to Forward-Looking Information contained in this presentation to reflect events or circumstances after the date hereof or to reflect the occurrence of unanticipated events.

Cautionary Statement

This presentation does not constitute an offer, advertisement or solicitation for the purchase of securities. Further, this presentation has been prepared by Gold Terra Resources Corp. ("Gold Terra") management and does not represent a recommendation to buy or sell securities. Investors should always consult their investment advisors prior to making any investment decisions. Any offer, advertisement or solicitation for the purchase of securities may only be conducted in accordance with applicable law.

In addition, investors are cautioned that this presentation may contain information about mineral properties adjacent to or near the Company's properties, or properties which the Company believes may be similar to the Company's properties. The Company has no right or interest in such properties. Mineral deposits on such adjacent, near or similar properties are not indicative of the mineral deposits, if any, which may be found on the Company's properties.

Cautionary Statement Regarding Estimates of Mineral Resources

The mineral resource estimates reported in this news release have been prepared in accordance with the requirements of Canadian securities laws, which differ from the requirements of United States' securities laws. The CIM Definition Standards differ from the definitions in the United States Securities and Exchange Commission (the "SEC") Guide 7 (the "SEC Guide 7"). The terms "mineral resource", "Measured mineral resource", "Indicated mineral resource" and "Inferred mineral resource" are defined in NI 43-101 and recognized by Canadian securities laws but are not defined terms under SEC Guide 7 or recognized under U.S. securities laws. Readers are cautioned not to assume that any part or all of mineral deposits in these categories will ever be upgraded to mineral reserves. "Inferred mineral resources" have a great amount of uncertainty as to their existence, and great uncertainty as to their economic and legal feasibility. It cannot be assumed that all or any part of an "Inferred mineral resource" will ever be upgraded to a higher category. Under Canadian securities laws, estimates of "Inferred mineral resources" may not form the basis of feasibility or pre-feasibility studies, except in rare cases. Readers are cautioned not to assume that all or any part of an inferred mineral resource exists or is economically or legally mineable.

Mineral resources are not mineral reserves, and do not have demonstrated economic viability, but do have reasonable prospects for economic extraction. The estimate of mineral resources may be materially affected by geology, environmental, permitting, legal, title, socio-political, marketing or other relevant issues. Measured and Indicated mineral resources are sufficiently well defined to allow geological and grade continuity to be reasonably assumed and permit the application of technical and economic parameters in assessing the economic viability of the resource. Inferred mineral resources are estimated on limited information not sufficient to verify geological and grade continuity or to allow technical and economic parameters to be applied. Inferred mineral resources are too speculative geologically to have economic considerations applied to them to enable them to be categorized as mineral reserves. Under Canadian rules, estimates of Inferred mineral resources may not form the basis of feasibility or pre-feasibility studies or economic studies except for Preliminary Assessment as defined under NI 43-101. Readers are cautioned not to assume that further work on the stated resources will lead to mineral reserves that can be mined economically.

Technical Information

The technical information in this presentation has been reviewed and approved by Joseph Campbell, COO of Gold Terra, a Qualified Person under National Instrument 43-101 ("NI 43-101"). Gold Terra's exploration activities at its properties were carried out under the supervision of Joseph Campbell.

Company Snapshot

Proven Mine Building Team

Gerald Panneton, Executive Chairman

- Geologist with +35 years of Canadian and international experience
- Founder, President and CEO of Detour Gold Corporation - (2006-2013)
- Detour Lake project grew to over 16 million ounces in reserves and was brought into production in just over six years.
- Raised \$2.6 billion in capital while at Detour Gold.
- Recipient of the PDAC 2011 Bill Dennis Award.

David Suda, President & CEO

- Financial services professional with 11 yrs of experience in capital markets including sales, trading, investment banking and corporate strategy

Joe Campbell, COO & Founder

- Professional geologist with +40 yrs of experience (mainly with Noranda and Western Mining Corp.)
- Discovered Meliadine (Nunavut) which sold to Agnico Eagle for \$700 M in 2010

Mark T. Brown, CFO

- 30 years of financial experience; President of Pacific Opportunity since 1997; Founder of Rare Element Resources Ltd.

Louis Dionne, Director

- Mining engineer with +35 yrs of experience (+20 yrs at Barrick Gold)
- Previous Director of Detour Gold and Aurizon Mines
- President and CEO of Richmond Mines from 2002-05

Yellowknife City Gold Project



Gold Terra Capitalization¹

(in millions)

Shares Outstanding	189.3
Warrants (Nov 2021)	6.97
Options	6.23
Fully Diluted Shares	202.5
Treasury ¹	\$6.3

Major Shareholders²

Mgmt & Board (6.1%)

Mackenzie Fund

SSI Asset Management AG

RBC Global Asset Mgmt

Konwave AG



Yellowknife Gold Belt

Exceptional 800 km² Land Package in One of Canada's Major Gold Districts

Project on same trend as two of the highest-grade gold mines in Canada

- Giant Mine – 8.1 Moz @ +0.6 oz/t (22g/t Au)
- Con Mine – 6.1 Moz @ +0.5 oz/t (15g/t Au)

Option with Newmont south of the Con mine

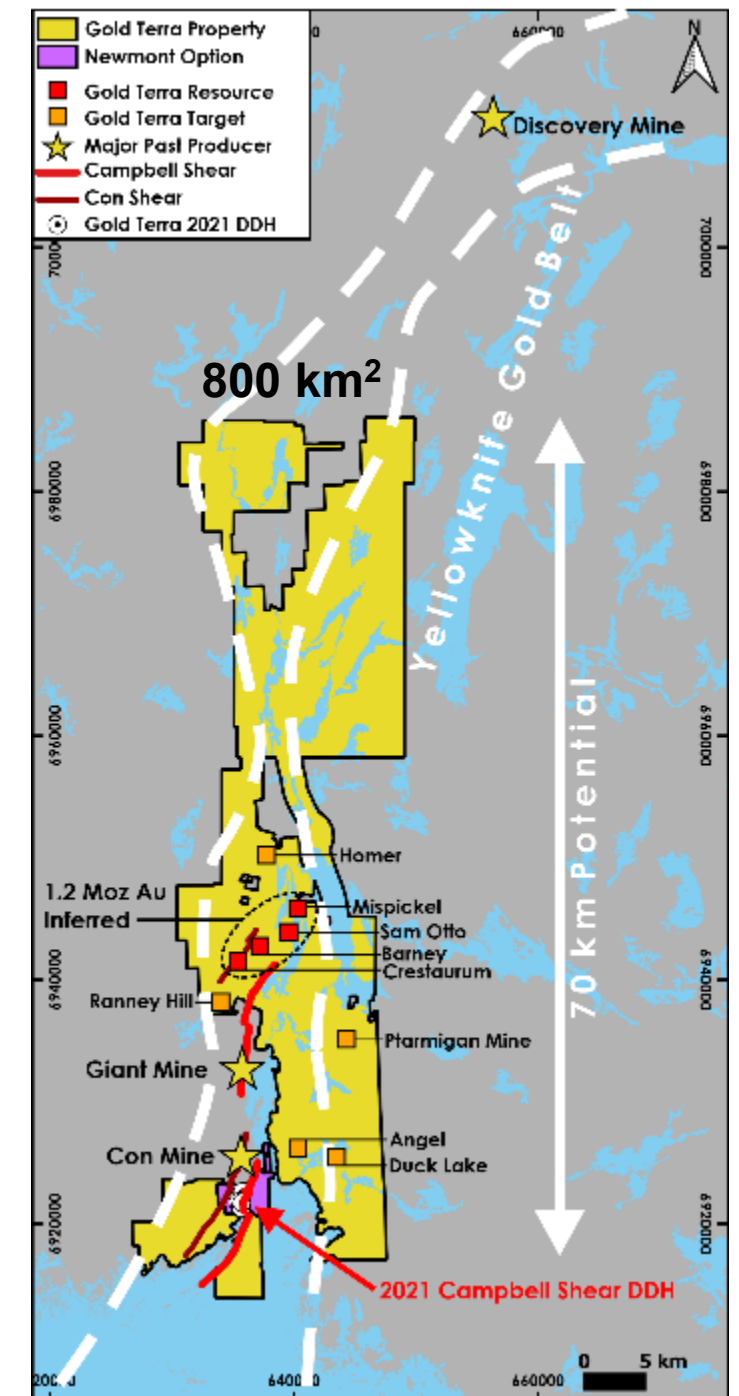
- Multiple High-Grade Targets on Campbell Shear

High potential for additional new discoveries with many targets

- Gold, silver and polymetallic targets

Close to City of Yellowknife

- Excellent Infrastructure



Yellowknife City Gold Project = Compelling Investment Opportunity

- **Current Resource of 1,207,000 Inferred Ounces and growing**
- **Newmont Option land (Sept 2020) is south of the former Con Mine (6.1 Moz)**
 - **Phase 1 Winter 2021 Drilling completed with following highlights:**
 - ❑ **Hole GTCM21-03 intersected 10.9 g/t Au over 4.4 metres (m) at 223.20m**
 - ❑ **Hole GTCM21-05 intersected 14.1 g/t Au over 4.7m at 280.65m**

The **Yellorex deposit** has been outlined over a minimum 200m strike length and a 300m depth using 50m x 50m drilling spacing and is open at depth

The company is planning a 10,000 metre Phase 2 drill programme starting in July on Yellorex to extend the zone at a depth below 300m to 600m, and beyond

Typical ore zones at the Con Mine are up to 200m in strike but extend at depth to more than 400m in a stacking profile, and to a depth of more than 1600m below surface.

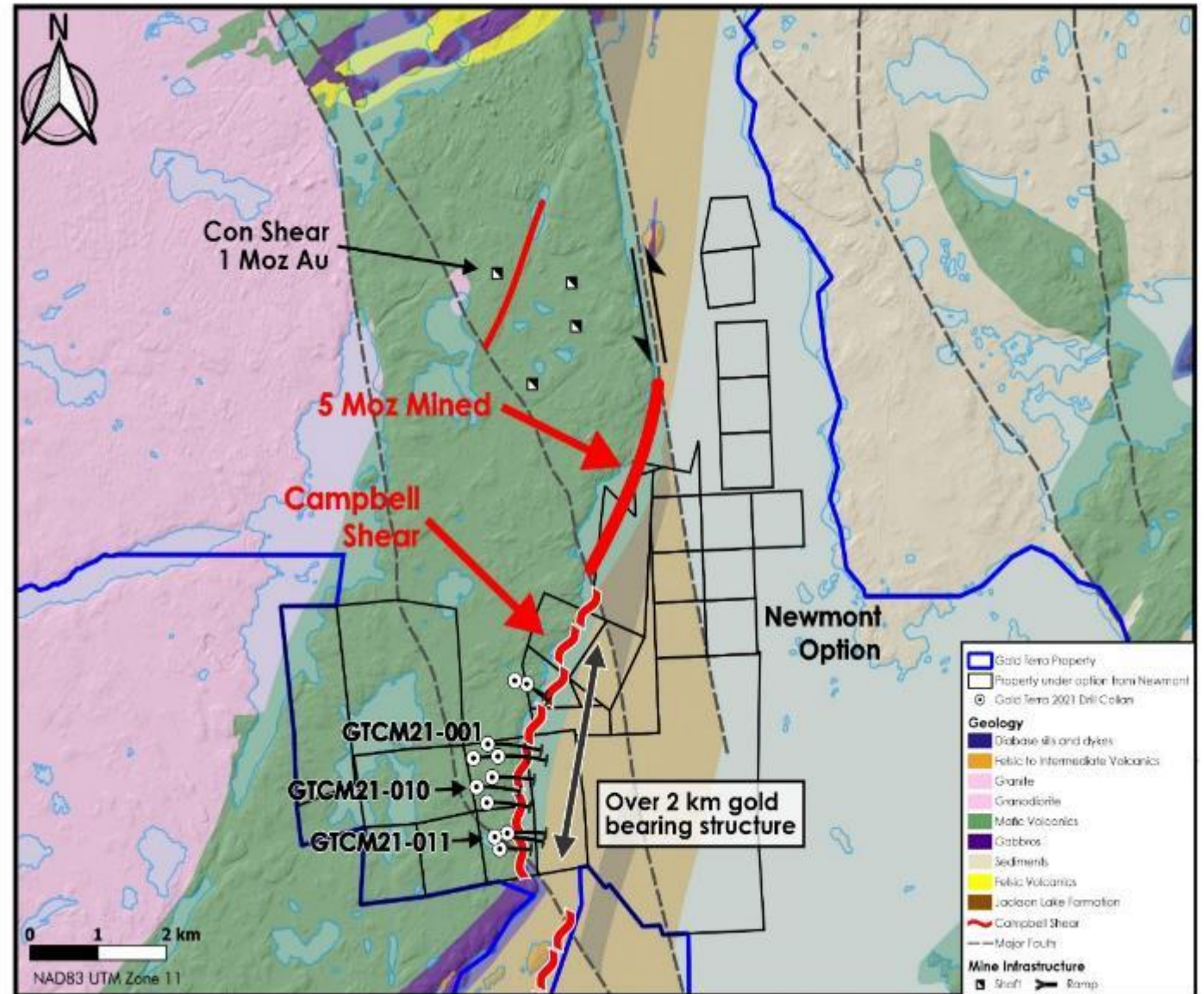
Campbell Shear High Priority Target – Historic 14 Moz

Campbell Shear target

~70 km prospective trend
relatively untested north and south
of former producing high-grade
Giant & Con mines

Con and Giant Mines - Same deposit over 7 km

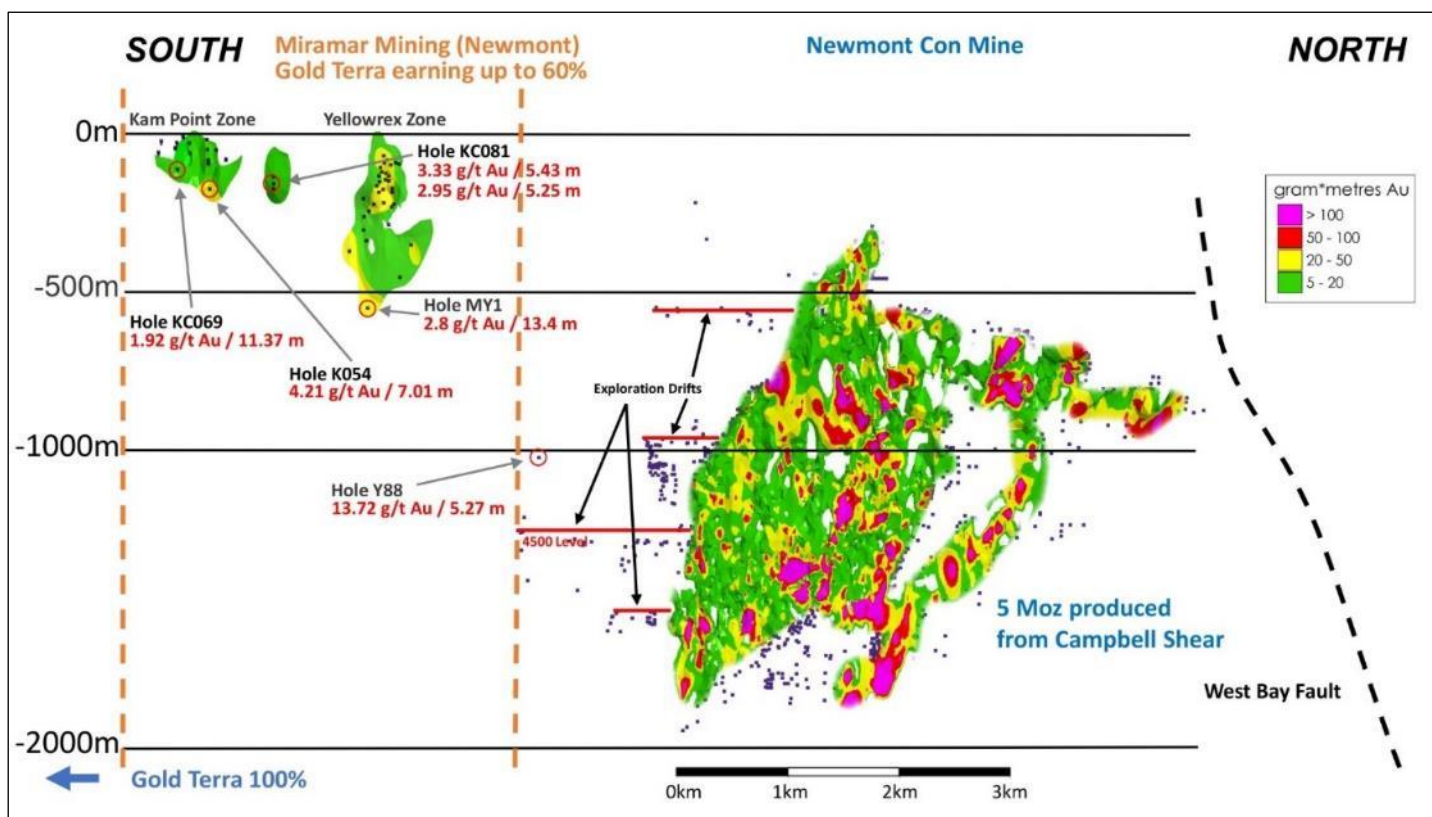
- **Con Mine (1938-2005):**
 - 1.0 Moz @ 20 g/t from Con Shear
 - 5.1 Moz @ 16 g/t from Campbell Shear
- Gold Terra signed an option to earn up to 60% on grounds immediately south of Con mine from Newmont



Campbell Shear Compilation

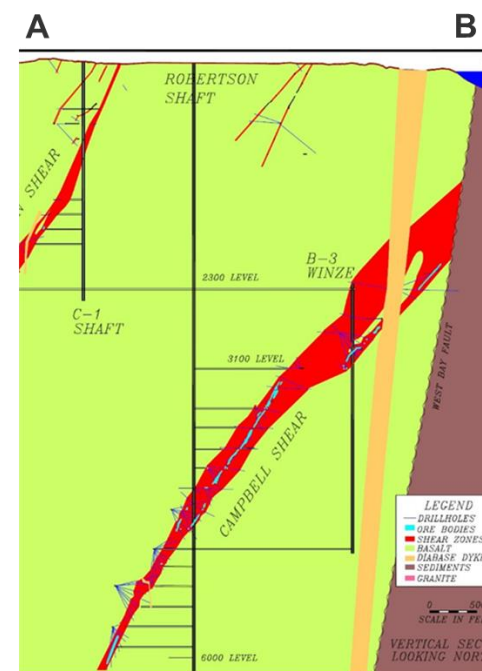
Campbell Shear Relatively Untested South of the Con Mine

Long-section



1. The intersections stated here are historical in nature and have not been verified by Gold Terra. Hole location, downhole survey, assay and lithologic data was obtained from the Con mine databases, and therefore is assumed by Gold Terra to be reasonably valid.

- The Campbell Shear extends South of the Con Mine
- Historical drilling has outlined known mineralization for more than 10km south of the Con Mine
- Known resources in **Yellorex** and **Kam Point North** zones to shallow depth
- Hole KA-006 drilled in 1961 intersected **8.23 g/t over 7.8 metres at -110m depth** (see *June 2, 2020 press release*)



2021 Campbell Shear Drilling Program

Phase 1 Drilling completed in April

- ❖ 13 holes totalling 7,242 metres on a 200m x 200m pattern
- ❖ Drill results confirm the strike continuity of gold mineralization for over two kilometres in the Campbell Shear structure from which the former Con Mine produced 5 million ounces of gold
- ❖ Gold mineralization identified that needs follow-up drilling at Yellorex



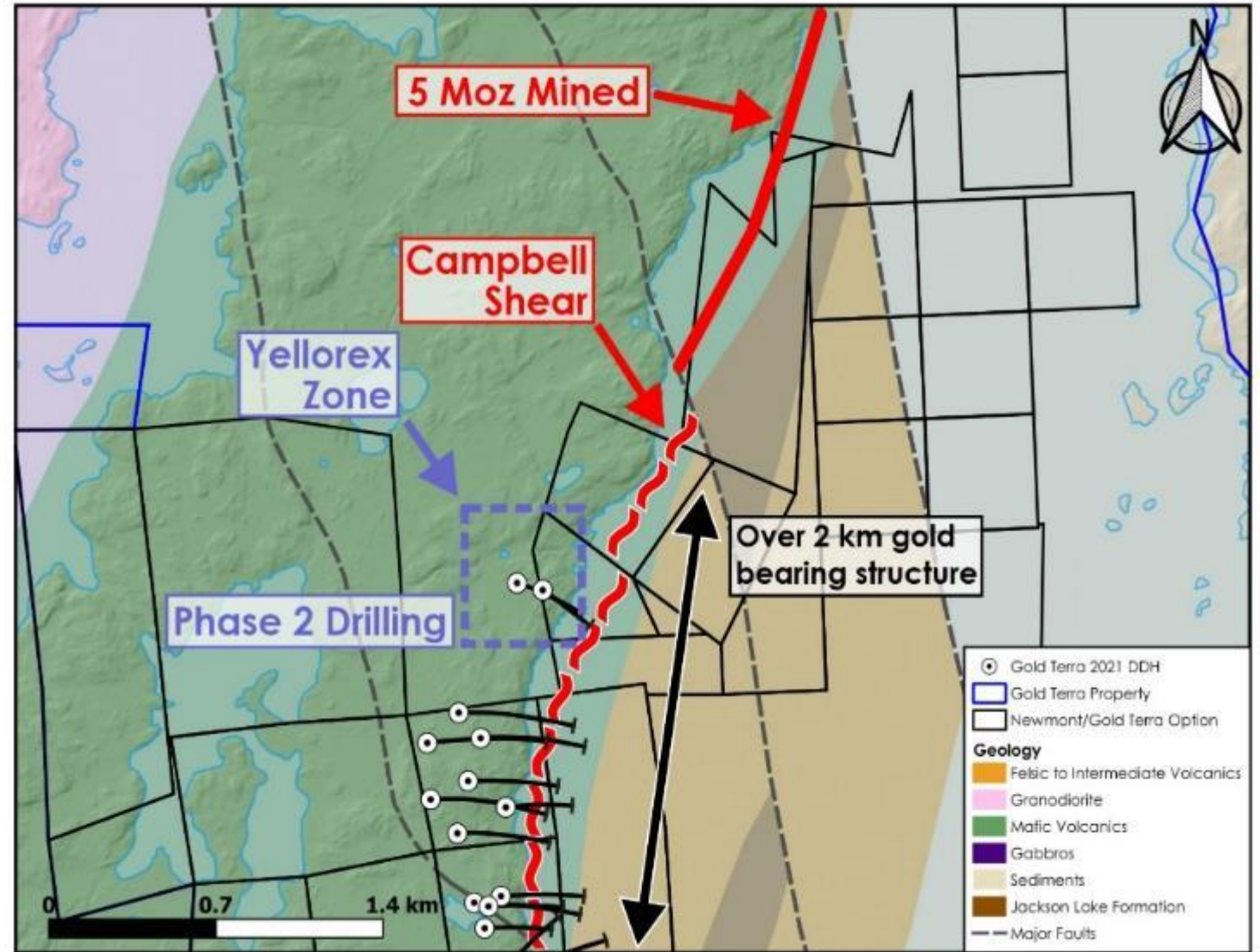
Phase 2 Drilling program to start in July

- ❖ Follow up drilling in the Yellorex area (14.4 g/t Au over 4.65m) along strike and down dip with 50 to 100m spacing drill program
- ❖ Fully funded 10,000 metre program

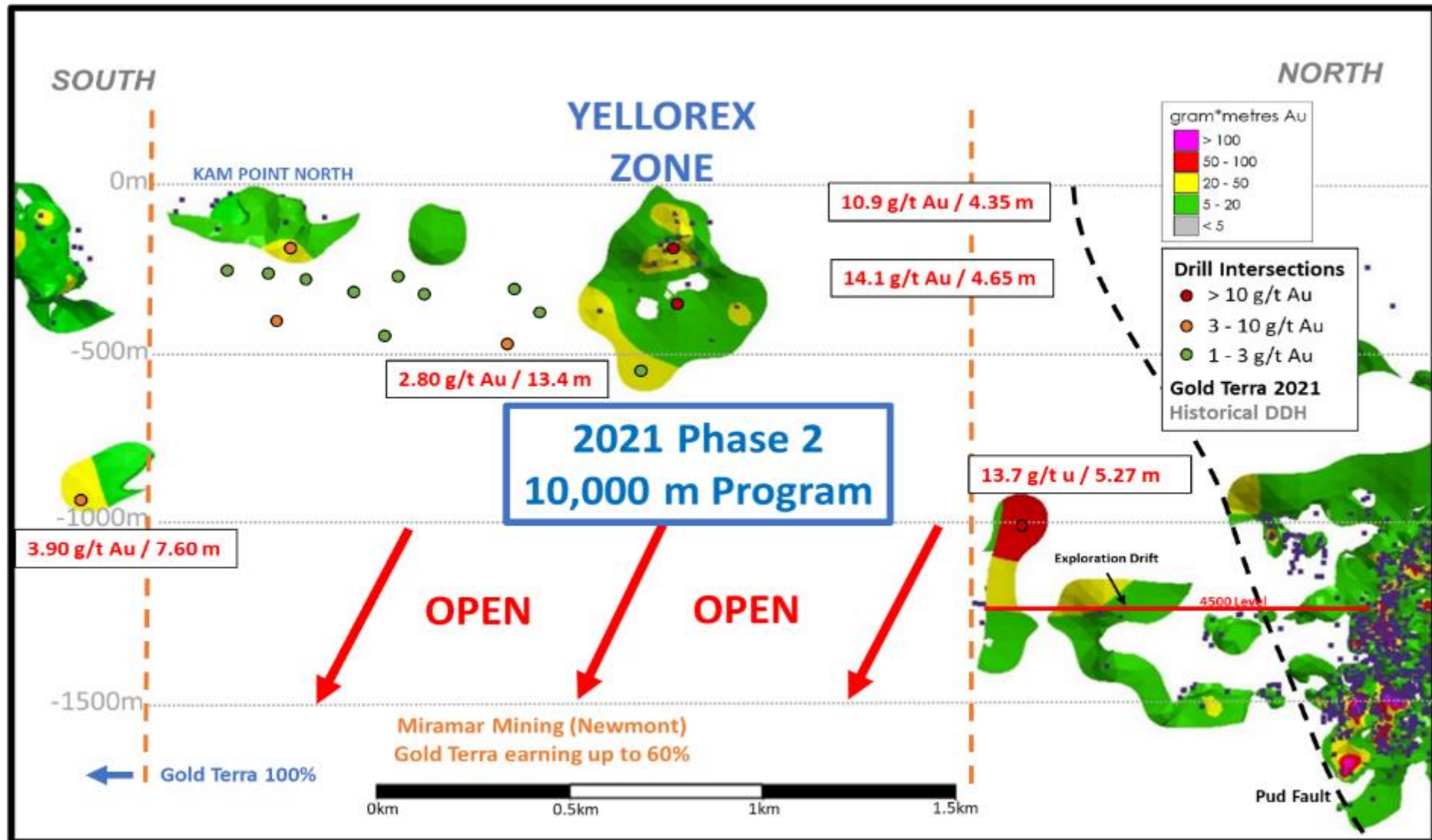
Phase 2 Drilling - Yellorex Zone

Yellorex Zone Target

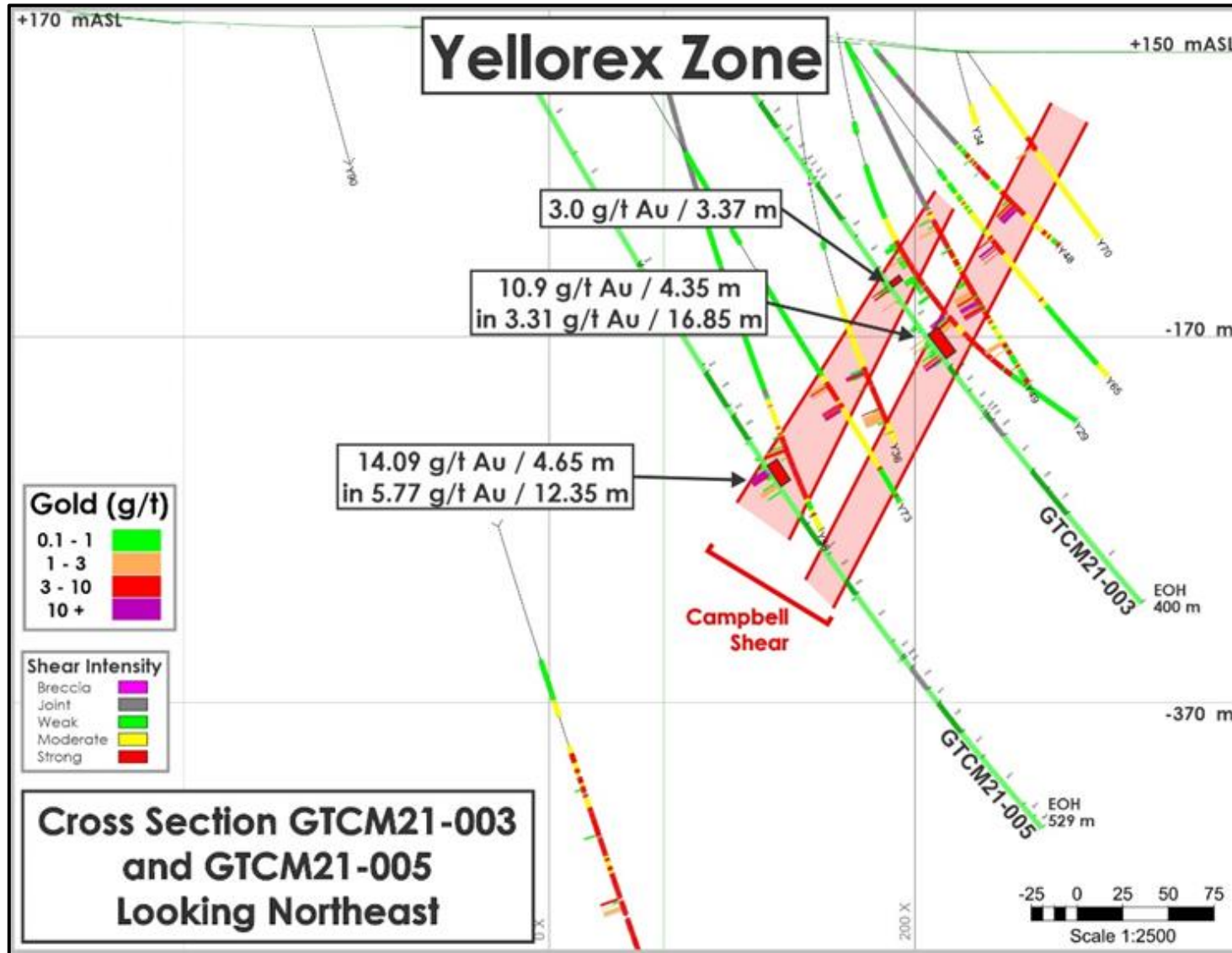
- Phase 2 drilling program will concentrate on the Yellorex Zone and South Con Mine area with a 50 to 100 metre drill spacing along strike and down dip
- Compilation work shows quartz veined gold system is dipping to the west and steeply plunging to the south
- Interpreted plunge length of more than 1.5 kilometres
- Phase 2 drilling program will follow this plunge to test the continuity of the high-grade gold lenses at depth and along strike



Campbell Shear Long Section – Yellorex Zone



Campbell Shear Drilling Results



Cross-section showing drill holes GTCM21-003 and 005

- **Hole GTCM21-003**
intersected **10.85 g/t Au over 4.35 metres** including **25.4 g/t Au over 1.55 metres**
- **Hole GTCM21-005**
intersected **5.77 g/t Au over 12.35 metres** including **14.09 g/t Au over 4.65 metres**
- **Zone remains open at depth and along strike**

2021 Updated Mineral Resource

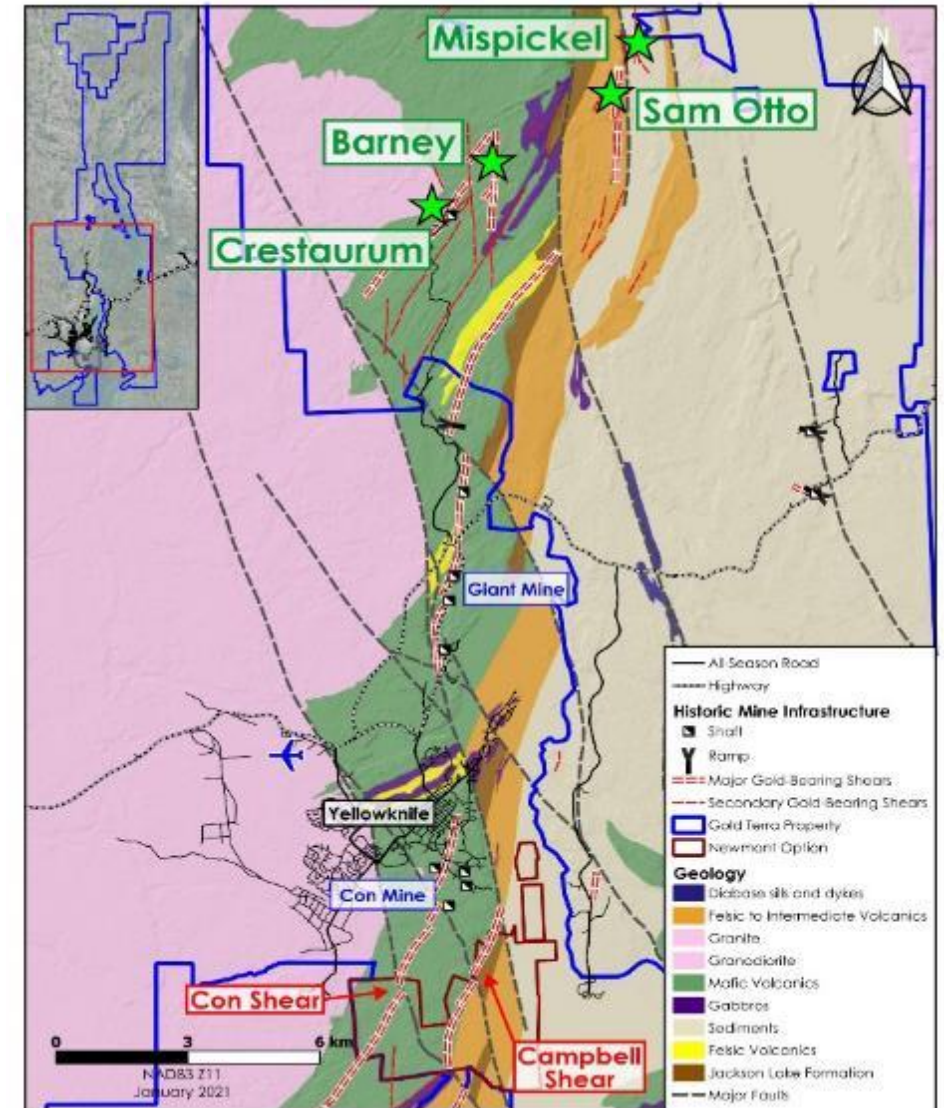
March 2021 mineral resource estimate of 1,207,000 inferred ounces:

- **Open pit** constrained inferred mineral resource of 21.8 million tonnes averaging 1.25 g/t for 876,000 ounces of contained gold, and an
- **Underground** inferred mineral resource of 2.55 million tonnes averaging 4.04 g/t for 331,000 ounces of contained gold.

A 64% increase to the November 2019 mineral resource estimate:

- **Open pit** : shallow high-grade starter pit (Inferred: 126,000 t at **9.41 g/t Au**)¹
- **Underground** : Inferred 153,000 oz¹ defined along strike length of 1.2km over widths of 2-15m and to depth of ~200m

Note - The classification of the mineral resource estimate was completed in accordance with the Canadian Institute of Mining, Metallurgy and Petroleum ("CIM") Definition Standards incorporated by reference in National Instrument 43-101



March 14, 2021 Mineral Resource

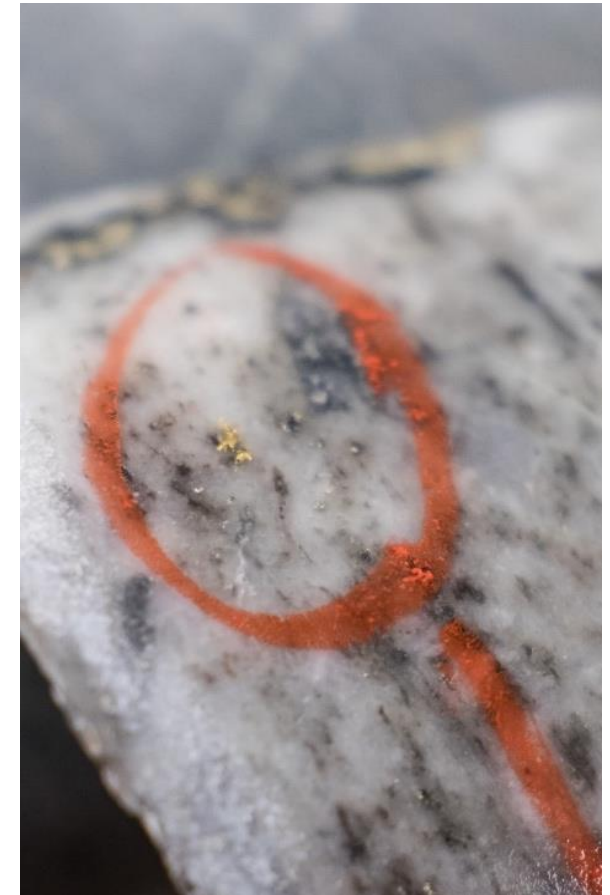
Sam Otto/Dave's Pond	Cut-off Grade (g/t Au)	Tonnes	Grade (Au g/t)	Contained Gold Ounces
In-pit	0.4	20,403,000	1.10	721,000
Underground	1.4	948,000	1.75	53,000

Mispickel	Cut-off Grade (g/t Au)	Tonnes	Grade (Au g/t)	Contained Gold Ounces
In-pit	0.4	893,000	2.22	64,000

Crestaurum	Cut-off Grade (g/t Au)	Tonnes	Grade (Au g/t)	Contained Gold Ounces
In-pit	0.4	461,000	6.17	91,000
Underground	2.5	954,000	6.16	189,000

Barney	Cut-off Grade (g/t Au)	Tonnes	Grade (Au g/t)	Contained Gold Ounces
Underground	2.0	646,000	4.30	89,000

Total Inferred Mineral Resources	Tonnes	Grade (Au g/t)	Contained Gold Ounces
In-pit	21,757,000	1.25	876,000
Outside-pit/UG	2,548,000	4.04	331,000
Grand Total Inferred Mineral Resources	24,305,000	1.54	1,207,000



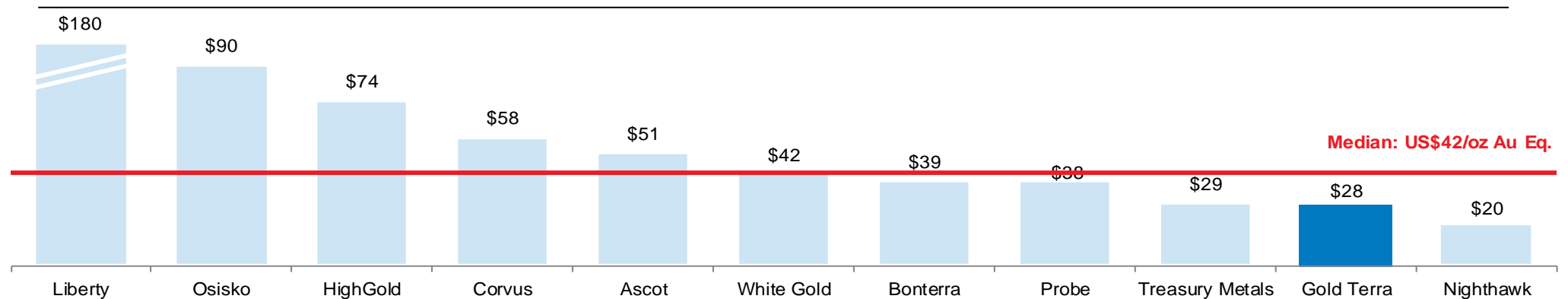
- (1) The classification of the current mineral resource estimate into an inferred mineral resource is consistent with current 2014 CIM Definition Standards - For Mineral Resources and Mineral Reserves
- (2) All figures are rounded to reflect the relative accuracy of the estimate.
- (3) All mineral resources are presented undiluted and in situ and are considered to have reasonable prospects for eventual economic extraction.
- (4) Mineral resources which are not mineral reserves do not have demonstrated economic viability. An inferred mineral resource has a lower level of confidence than that applying to a measured mineral resource and an indicated mineral resource. The quantity and grade of reported inferred mineral resources in this estimation are uncertain in nature and there has been insufficient exploration to define these inferred mineral resources as a measured mineral resource or an indicated mineral resource and it is uncertain if further exploration will result in upgrading the inferred mineral resource to a measured mineral resource or an indicated mineral resource.
- (5) It is envisioned that parts of the Sam Otto/Dave's Pond, Mispickel and Crestaurum deposits may be mined using open pit mining methods. Open pit mineral resources are reported at a cut-off grade of 0.4 g/t Au within a conceptual pit shell.
- (6) It is envisioned that parts of the Sam Otto/Dave's Pond and Barney deposits may be mined using lower cost underground bulk mining methods whereas parts of the Crestaurum deposit may be mined by underground selective narrow vein methods. A selected cut-off grade of 1.4 g/t Au is used to determine the underground resource for the Sam Otto/Dave's Pond deposit, 2.0 g/t Au for the Barney deposit (assuming it can be accessed underground from the Crestaurum deposit), and 2.5 g/t for the Crestaurum Deposit.
- (7) High-grade capping was done on 1 m composite data. Capping values of 55 g/t Au were applied to Crestaurum and 60 g/t Au for Mispickel.
- (8) Specific gravity values were determined based on physical specific gravity test work from each deposit: Crestaurum at 2.85; Barney at 3.00; Sam Otto and Mispickel at 2.80.
- (9) Cut-off grades are based on a gold price of US\$1,500 per ounce, a gold recovery of 90%, processing cost of US\$16.00 per tonne milled, and variable mining costs including US\$2.00 for open pit and US\$44.00 to US\$79.00 for underground.
- (10) The results from the pit optimization are used solely for the purpose of testing the "reasonable prospects for economic extraction" by an open pit and do not represent an attempt to estimate mineral reserves. There are no mineral reserves on the Property. The results are used as a guide to assist in the preparation of a mineral resource statement and to select an appropriate resource reporting cut-off grade.
- (11) The estimate of mineral resources may be materially affected by environmental, permitting, legal, title, taxation, socio-political, marketing, or other relevant issues.

Peer Group Analysis: Current EV per Oz = 28 US\$ (in 1800\$ gold market)

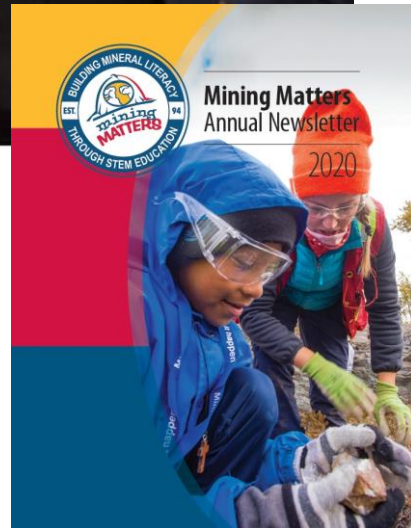
DEVELOPMENT STAGE COMPANIES RESOURCE TABLE

Company	Market Cap.	Enterprise Value	Key Asset				Global Au Eq. Resource (Attributable)			
			Name	Ownership	Location	Stage	Reserves	M&I	Inferred	Total Resources
	(US\$ mm)	(US\$ mm)					(mm oz)	(mm oz)	(mm oz)	(mm oz)
Osisko	\$896	\$599	Windfall	100%	Canada	PEA	--	1.9	4.8	6.6
Liberty	\$367	\$326	Black Pine	100%	USA	Exploration	--	1.4	0.4	1.8
Corvus	\$276	\$256	North Bull Frog	100%	USA	PEA	--	3.8	0.6	4.4
Ascot	\$189	\$165	Premier	100%	Canada	FS	1.2	0.7	1.3	3.2
Probe	\$183	\$132	Val-d'Or East	100%	Canada	Res. Estimate	--	0.9	2.6	3.4
Treasury Metals	\$96	\$82	Goliath	100%	Canada	PEA	--	2.2	0.6	2.9
Bonterra	\$84	\$81	Gladiator	100%	Canada	Res. Estimate	--	0.7	1.4	2.1
White Gold	\$69	\$64	White Gold	100%	Canada	Res. Estimate	--	1.1	0.4	1.5
HighGold	\$56	\$40	Johnson Tract	100%	USA	Res. Estimate	--	0.4	0.1	0.5
Nighthawk	\$49	\$42	Colomac	100%	Canada	Res. Estimate	--	1.7	0.5	2.2
Gold Terra	\$40	\$33	Yellowknife City	100%	Canada	Res. Estimate	--	--	1.2	1.2
Median	\$96	\$82					--	1.1	0.6	2.2

EV / RESOURCES (US\$/OZ AU EQ.)



Community and Indigenous Engagement Program



Strong and Broad Engagement:

**The City of Yellowknife
Yellowknives Dene First Nations Government
Tłıchǫ Government
North Slave Metis Alliance**

Gold Terra has implemented the Forward-Looking Engagement Plan

**Support of Indigenous and community businesses
Implemented community school education courses including prospecting through Mining Matters
Sponsor community and Indigenous events**

Gold Terra received the NWT MAX Award for Environmental and Social Responsibility in 2017

For more information, please contact:

David Suda
President & CEO

Toll-Free: 855-737-2684 Phone: 604-689-1749
dsuda@goldterracorp.com

Mara Strazdins
Manager of Investor Relations
Phone: 1-778-897-1590 | 604-689-1749 ext 102
Strazdins@goldterracorp.com



www.goldterracorp.com

TSX.V: **YGT** | OTCQX: **YGTFF** | Frankfurt: **TX0**