



**HIGH GRADE GOLD
Multi Million Oz**

May 2026



HIGH -GRADE GOLD IN THE NORTHWEST TERRITORIES, CANADA

GOLD TERRA RESOURCE CORP (TSX-V:YGT; FRANKFURT:TX0; OTCQB:YGTFF) is a junior gold company drilling to expand its gold mineral resources in Yellowknife, NWT, Canada. 2026 drilling is focused on the prolific Campbell Shear, the main mineralized shear system that hosts the former-producing high-grade Con Mine (6.1 Moz @16-20 g/t Au).

A Golden Investment Opportunity @ < \$30/oz

- ✓ Safe Canadian Jurisdiction with **Mining friendly Infrastructure** and **Green Power**
- ✓ **Con Mine Option / Brownfield Project** with existing Mining Lease
- ✓ **DISTRICT SCALE** with land position (over 836 sq km) covering 70 kilometers of the High-Grade Campbell Shear (**14 Moz produced**)
- ✓ **To date in 2026, 11,000 metres completed south of the historic Con Mine on the South extension of the Campbell Shear and in the Yellorex Zone, and 4,905 metres on the Walsh Lake area, where gold mineralization was extended to 700m strike length**
- ✓ Controls one of six largest high-grade mining camps in Canada
- ✓ Large unexplored Archean greenstone belt area - **GTWL26-024 intersected 22.46 g/t Au (uncut) over 5.7 m** from 119.6 m to 125.3 m downhole, **including 198 g/t over 0.5 m** starting at 119.60 m
- ✓ Experienced mine building management (**Barrick / Detour Gold**)
- ✓ **Upcoming Catalysts:**
 - Updated MRE following the 2026 drilling program
 - Year End 2026 Preliminary Economic Assessment (PEA)

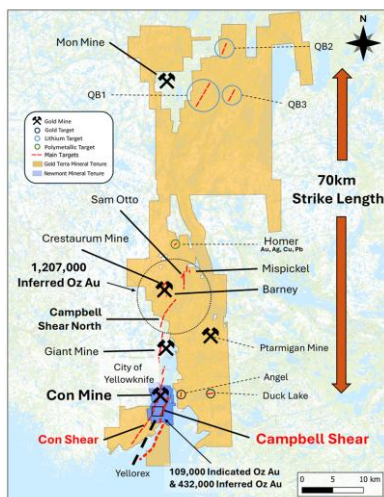


Con Mine Option Property – Option to agreement with Newmont to purchase 100% interest in the past producing **Con Mine (6.1 Moz @ 15-20 g/t Au 1938-2003)**

Combined 1.8-Million Ounces Discovered

September 2022 (MRE)* **Mineral Resource Estimate of 109,000 Indicated Ounces and 432,000 Inferred Ounces** at an average grade of **7 g/t Au** using a 3.5 g/t Cut-off grade (COG) on the Con Mine Option Property. Based on 22,491 m drilled in 2021-2022 to confirm gold mineralization and historical drilling.

Plus - March 2021 mineral resource estimate of 1,207,000 inferred ounces on the Yellowknife Project, 20 km north of town in 4 satellite deposits with **Crestaurum open pit @ 6 g/t Au**

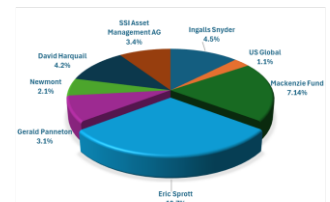


Timeline - Catalysts



* September 2022 MRE: "Initial Mineral Resource Estimate for the CMO Property, Yellowknife City Gold Project, Yellowknife, Northwest Territories, Canada" by QP, Allan Armitage, Ph. D., P. Geo., SGS Geological Services, on www.goldterracorp.com and SEDAR at www.sedar.com

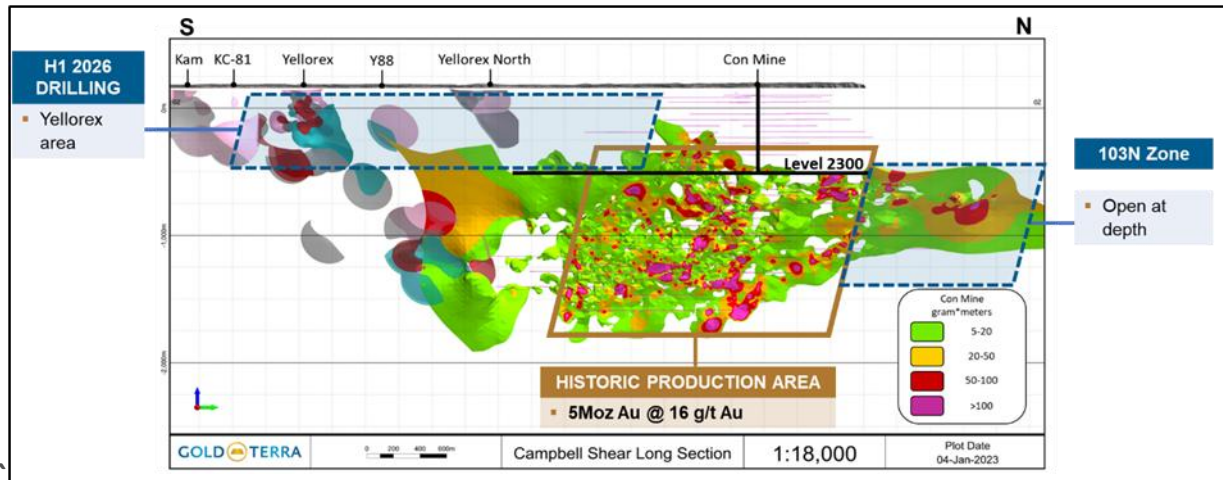
Top Shareholders +30%



Contact us: Gerald Panneton, Chairman & CEO gpanneton@goldterracorp.com
Mara Strazdins, IR Strazdins@goldterracorp.com Phone 416-710-0646

www.goldterracorp.com

2026 drilling targets the past producing Campbell Shear in the Yellorex Trend south of the historic Con Mine:

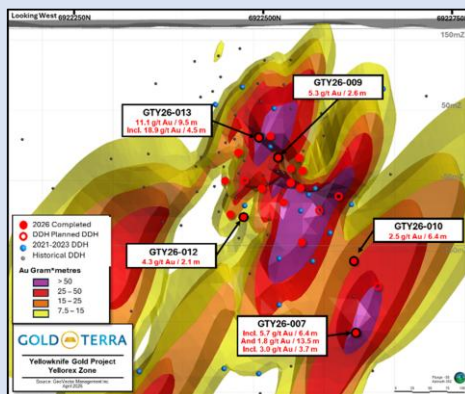


Yellorex Area - 2026 Drilling to Expand 2022 MRE on the CMO Property:

Hole GTY26-001 intersected **8.20g/t Au over 20.35 m** from 242.5 m to 262.85 m downhole, including **18.7 g/t over 6.8 m**

Hole GTY26-013 intersected **9.53 g/t Au over 11.10 m** from 211.30 m to 222.10 m downhole, including **18.94 g/t over 4.50 m**

Hole **GTY26-007** is our deepest holes in 2026, **extending the high-grade shoot in this area with 5.7 g/t Au over 6.4 m**



100 % Owned Walsh Lake Area - Open for Expansion 20 kilometres north of Yellowknife

15 holes with 4,904.9 m completed

Hole GTWL26-024 intersected **22.46 g/t Au (uncut) over 5.7 m** from 119.6 metres to 125.3 metres downhole, including **198 g/t over 0.5 m** starting at 119.60 metres opening **two (2) new gold mineralization zones** separated by 200 metres with multiple visible gold specks

