



**HIGH GRADE GOLD
Multi Million Oz**

May 2026



HIGH -GRADE GOLD IN THE NORTHWEST TERRITORIES, CANADA

GOLD TERRA RESOURCE CORP (TSX-V:YGT; FRANKFURT:TX0; OTCQB:YGTFF) is a junior gold company expanding its gold mineral resources in Yellowknife, NWT, Canada. The 2026 drilling is focused on the prolific Campbell Shear, the main mineralized shear system that hosts the former-producing high-grade Con Mine (6.1 Moz @16-20 g/t Au).

A Golden Investment Opportunity @ < \$30/oz

- ✓ Safe Canadian Jurisdiction with **Mining friendly Infrastructure** and Green Power
- ✓ **Con Mine Option / Brownfield Project** with existing Mining Lease
- ✓ **DISTRICT SCALE** with land position (over 836 sq km) covering 70 kilometers of the High-Grade Campbell Shear (**14 Moz produced**)
- ✓ **To date in 2026, 11,000 metres completed south of the historic Con Mine on the South extension of the Campbell Shear and in the Yellorex Zone, and 4,905 metres on the Walsh Lake area, where gold mineralization was extended to 700m strike length**
- ✓ Controls one of six largest high-grade mining camps in Canada
- ✓ Large unexplored Archean greenstone belt area - **GTWL26-024 intersected 22.46 g/t Au (uncut) over 5.7 m** from 119.6 m to 125.3 m downhole, including **198 g/t over 0.5 m** starting at 119.60 m
- ✓ Experienced mine building management (**Barrick / Detour Gold**)
- ✓ **Upcoming Catalysts:**
 - 2nd updated 2026 MRE in the Fall with all drilling results
 - Year End 2026 Preliminary Economic Assessment (PEA)



Con Mine Option Property – Option to agreement with Newmont to purchase 100% interest in the past producing **Con Mine (6.1 Moz @ 15-20 g/t Au 1938-2003)**

Combined 2.0-Million Ounces Discovered

Updated 2026 Mineral Resource Estimate (MRE) 43-101 (**May 15, 2026**):

Con Mine Option CMO) Property

998,000 ounces

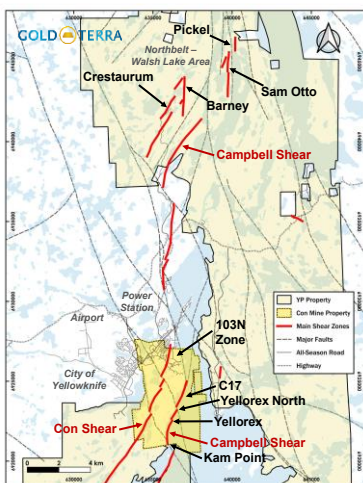
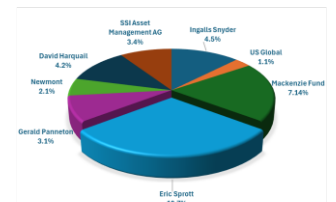
**103N = 595,000 Ounces
Yellorex = 203,000 Ounces**

+

**Crestaurem - 202,000 oz
@ 4 g/t Au**

Open Pit (2:1) and decline

Top Shareholders +30%

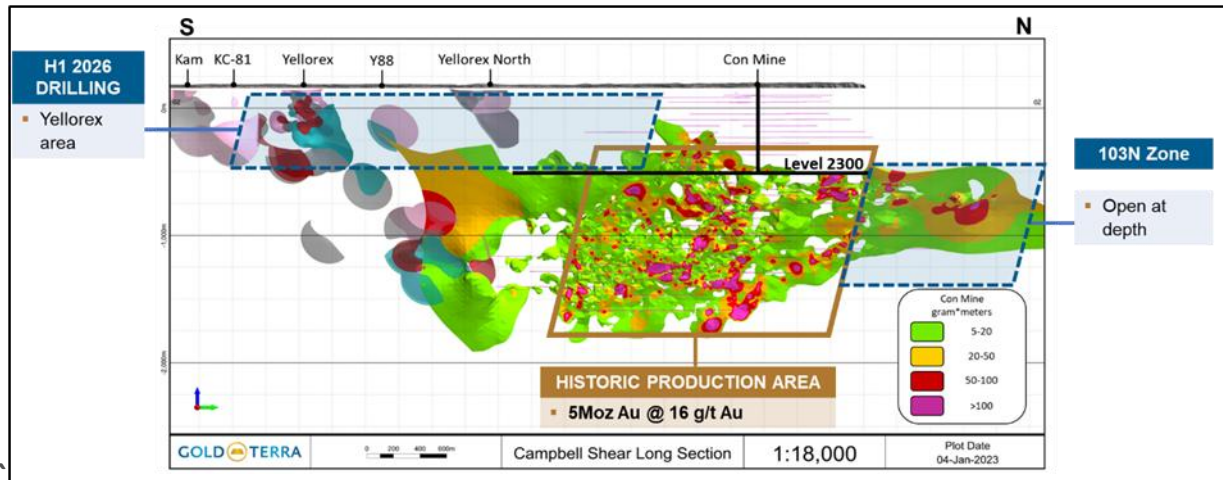


Timeline - Catalysts



* **May 15, 2026 press release** “Gold Terra Adds 595,000 Inferred Ounces within 5.1 Million Tonnes grading 3.64 g/t Au on the Con Mine Zone 103N in an Updated 2026 Mineral Resource Estimate, Yellowknife, NWT”

2026 drilling targets the past producing Campbell Shear in the Yellorex Trend south of the historic Con Mine:

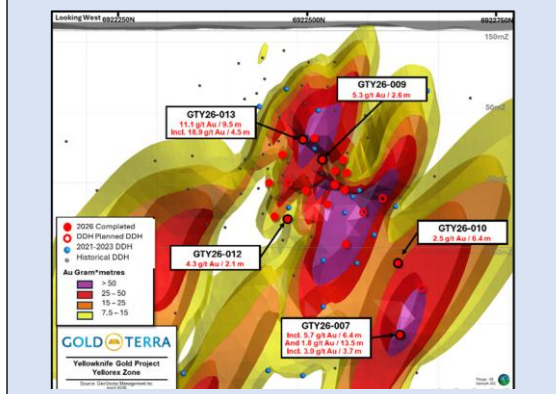


Con Mine Option

Yellorex Area - 2026 Drilling to Expand 2022 MRE on the CMO Property:
 Hole GTY26-001 intersected **8.20g/t Au over 20.35 m** from 242.5 m to 262.85 m downhole, including **18.7 g/t over 6.8 m**

Hole GTY26-013 intersected **9.53 g/t Au over 11.10 m** from 211.30 m to 222.10 m downhole, including **18.94 g/t over 4.50 m**

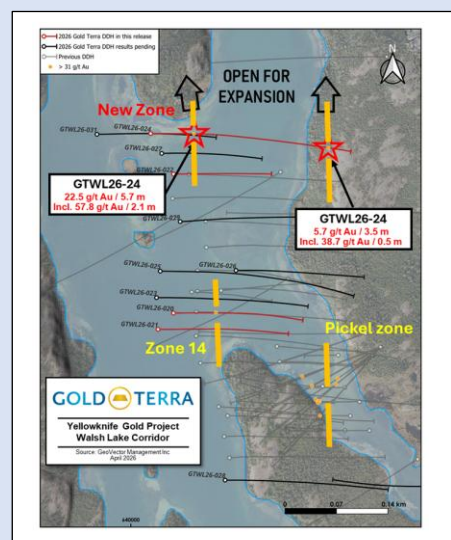
Hole **GTY26-007** is our deepest holes in 2026, extending the high-grade shoot in this area with **5.7 g/t Au over 6.4 m**



100 % Owned Walsh Lake Area

- **Open for Expansion**
- **20 kilometres north of Yellowknife**
- **15 holes with 4,904.9 m completed**

Hole GTWL26-024 intersected **22.46 g/t Au (uncut) over 5.7 m** from 119.6 metres to 125.3 metres downhole, including **198 g/t over 0.5 m mineralization zones** separated by 200 metres with multiple visible gold specks



Cautionary Statement - The mineral resource estimates reported here have been prepared in accordance with the requirements of Canadian securities Mineral resources are not mineral reserves, and do not have demonstrated economic viability, but do have reasonable prospects laws. The CIM Definition Standards differ from the definitions in the United States Securities and Exchange Commission (the "SEC") Guide 7 (the "SEC Guide 7"). "Inferred mineral resources" have a great amount of uncertainty as to their existence, and great uncertainty as to their economic and legal feasibility. <https://goldterracorp.com>.